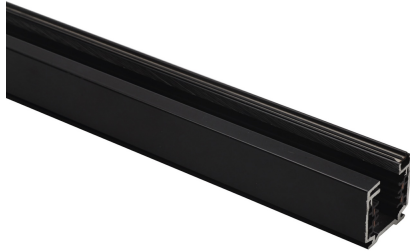


## 225-202

## 3 Circuit Surface/DB

Eutrac 2m, Black Powder Coated Aluminium, 3 Circuit, 7 Conductor, Surface Mounted Track, 36 x 32mm, With Data Bus, 2yrs Warranty, Made In Germany



[Click to view the full product details](#)

### DATA SHEET

#### MARKETING INFORMATION

Brief Description	2m Black Aluminium Surface Mounted Track 36 x 32mm With Data Bus
-------------------	--

#### PHYSICAL CHARACTERISTICS

Colour Finish	Black (RAL9005)
---------------	-----------------

#### MECHANICAL SPECIFICATION

Item Nett Weight (kg)	2.3kg
Length (m)	2m
Width (mm)	36mm
Height (mm)	32mm

#### QUALITY STANDARDS

Warranty (yrs)	2yrs
----------------	------

#### ADDITIONAL INFORMATION

Delivery Requirements	Item Is Collection Only.
-----------------------	--------------------------

### OVERVIEW

7-conductor surface track for three circuits plus data bus, consists of an extruded aluminium profile and two PVC supporter profiles, each with two embedded 2.5 mm<sup>2</sup> cross section copper conductors, plus one PVC supporter profile with two embedded 1 mm<sup>2</sup> cross section nickel plated copper conductors, for three independent switchable circuits, earthing through the aluminium profile plus two data conductors. Easily cuttable in the field with a standard saw. The track has pre-punched slotted holes for ease of fitment. The track system can be integrated into a building management system. Adapters with data bus contacts and SELV safety device ensure compliance with the Safety Extra Low Voltage regulations EN 60950. The data information can be picked up anywhere along the track via data bus equipped adapters. Beside the DALI protocol the data bus can be used for DMX, 0-10V or KNX protocols. Adapters without data bus contacts can be also used in tracks with data bus when data functionality is not required.

Inspired Lighting Ltd. are continually developing and improving their products.  
Technical specifications subject to change without prior notice.